



JD
Advance Materials

Wear-resistant metal lining for large SAG mills and ball mills

Luoyang Jinda Machinery Equipment Co., LTD



About us



Luoyang Jinda Machinery Equipment Co., Ltd. was established in 2004



Chaoyang Town, Mengjin District, Luoyang City, Henan Province, China.



We cooperate with wear-resistant material research centers of internationally renowned universities and domestic well-known mining equipment companies and materials research institutes. And we researched and developed new metal wear-resistant materials by ourselves.



Enterprise production area, accounting for 13000 square meters. The annual production capacity of our company is 20,000 tons.



Wear-resistant metal lining for large SAG mills and ball mills



About the product



Our company specializes in the production of metal wear-resistant material products. The company's independent research and development of new wear-resistant materials, there are two characteristics: 1. Material advanced and scientific; 2. Advanced, scientific and unique heat treatment process. The production liners have high hardness and toughness, long service life, and do not break during the whole use process. The service life of the product is about 30% longer than that of similar products in the same industry. Effectively ensure the mill operating rate, reduce operating costs, and improve economic benefits.

Advantage:

- The service life of products is higher than that of similar products in the same industry;
- No breaking, no cracking, no deformation.



Product



JD
Advance Materials

1

Metal wear-resistant lining for large SAG mills

and ball mills :

Semi-autogenous mills;

Full autogenous mills;

Ball mills;

Vertical mills.





Product



JD
Advance Materials



The life of the products produced by Jinda is 30% higher than that of similar products.

2

Metal wear-resistant lining for large SAG mills and ball mills





Product



JD
Advance Materials

3

Mill Liners



Billion Colour Photography



Billion Colour Photography



Product



JD
Advance Materials

4

Liners





Product usage effect



JD
Advance Materials



1

Installation of products produced by Jinda Company

Date: May 15, 2021

Location «Duobaoshan Copper Mine»

Heilongjiang Province, China

It belongs to the Zijin Mining Group

Semi-autogenous mill 11*6,4m

Install the whole set of liners.

The service life is 126 days.

The ore processing capacity is 5,15 million tons
(Contract guarantees 3,6 million tons).



Product usage effect



JD
Advance Materials

Installation of products produced by Jinda Company



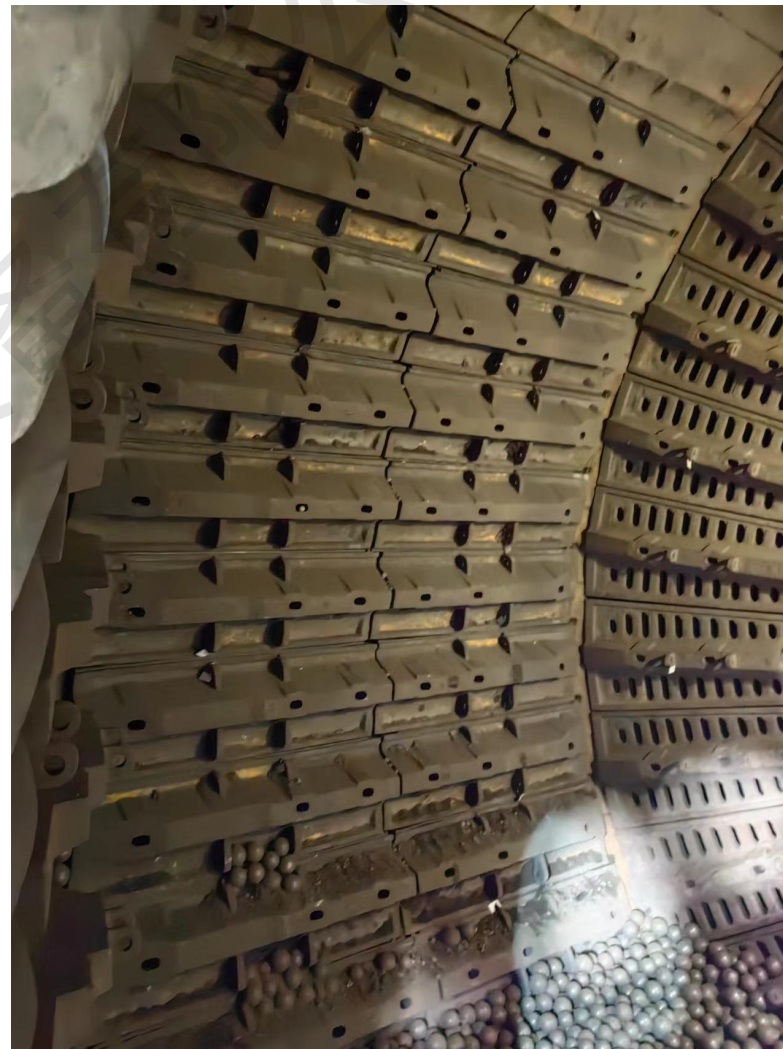
Date: October 8, 2022

Location «Zijin Mount gold- copper Mine»

Fujian Province, China

Semi-autogenous mill with a diameter of 11*5,4m

Installation of shell liners and lattice plates.





cooperative partner



No	Mill type number	Long-term customer	location
1	SAG Mill 7.5*3.6m	Wuzhou Yinxing Mining Co., Ltd	China
2	SAG Mill 11 *6.4m	Zijin Mining Logistics Co., Ltd. Duobaoshan Copper Mine	China
3	SAG Mill 9.75*4.72m	Yunnan Diqing Non-ferrous Metals Co., Ltd.-Pulang Copper Mine	China
4	SAG Mill 10.37*5.19m	Jinduicheng Molybdenum Group Co, Ltd Ruyang Molybdenum Industry Branch Company	China
5	SAG Mill 11*5.4m	Zijin mining & logistics co., LTD longyan copper tres plantas	China
6	SAG Mill 6.4*3.2m	ZiJin Mining Co Longnan Mine	China
7	SAG Mill 7.5*3.2m	Zijin Mining - Xizang Julong Zhibula copper mine	China
8	SAG Mill 10.37*5.4m	Taiyuan iron and steel LAN County mine	China
9	SAG Mill 6.0*3.5m	Jinshan Mining Co, Inner Mongolia	China
10	SAG Mill 6.0*6.0m	Guangxi Jinchuan Group	China
11	SAG Mill 6.7*3.6m	Guangxi Xinxiang Aluminium Mine	China
12	SAG Mill 5.5*3.5m	Inner Mongolia Yinman Mining	China
13	SAG Mill 7.9*6m	Zijin Mining - Aurora Gold Mine	Guyana
14	SAG Mill 7.5*3.9m	ZiJin Mining Co Copper Mine	Serbia
15	SAG Mill 10.37*5.19m	Zijin Mining - Xizang Julong - Qulong Concentrator	China
16	SAG Mill 10.36*4.59m	Armenia Zangezur Copper Molybdenum Combine Closed Joint Stock Company	Armenia
17	SAG Mill 9.75*5.8m	Jilin Tianchi Molybdenum Co., LTD	China



cooperative partner



No	Mill type number	Long-term customer	location
1	Ball Mill $\phi 5.5 \times 8.5\text{m}$ Ball Mill $\phi 5.03 \times 8.5\text{m}$	ZiJin Mining Co Longnan Mine	China
2	Ball Mill $\phi 4.8 \times 7\text{m}$	Luanchuan Hengyu Mining Co.,Ltd.	China
3	Ball Mill $\phi 3.2 \times 5.4\text{m}$	La Compagnie Minire de Musonoie Global Socit par actions simplifie	Africa- Democratic Republic of Congo
4	Ball Mill $\phi 2.4 \times 3.6\text{m}$	Ruili Jintong Import & Export Co., Ltd.	China
5	Ball Mill $\phi 4 \times 7\text{m}$	Qinghai Hongxin Mining Co., Ltd.	China
6	Ball Mill $\phi 7.9 \times 13.6\text{m}$	Heilongjiang Duobaoshan Copper Industry Co.,Ltd.	China
7	Ball Mill $\phi 7.9 \times 13.6\text{m}$	Zijinshan Copper-Gold Mine	China
8	Ball Mill $\phi 3.6 \times 6\text{m}$ Ball Mill $\phi 2.7 \times 4\text{m}$ Ball Mill $\phi 3.2 \times 4.5\text{m}$	Russia Longxing Mining Development Co., Ltd.	Russia



About standard



1

JINDA MACHINERY implements the quality management system, standard ISO 9001:2015

2

JINDA MACHINERY implements an environmental management system, standard GB/T24001-2016 complies with ISO 14001:2015

3

JINDA MACHINERY implements an occupational health and safety management system, standards GB/T45001-2020 conforms to ISO 45001-2018

4

JINDA MACHINERY intellectual property management system, standard GB/T29490-2013 conforms to ISO 45001-2018



About Research and Development (R&D)



JD

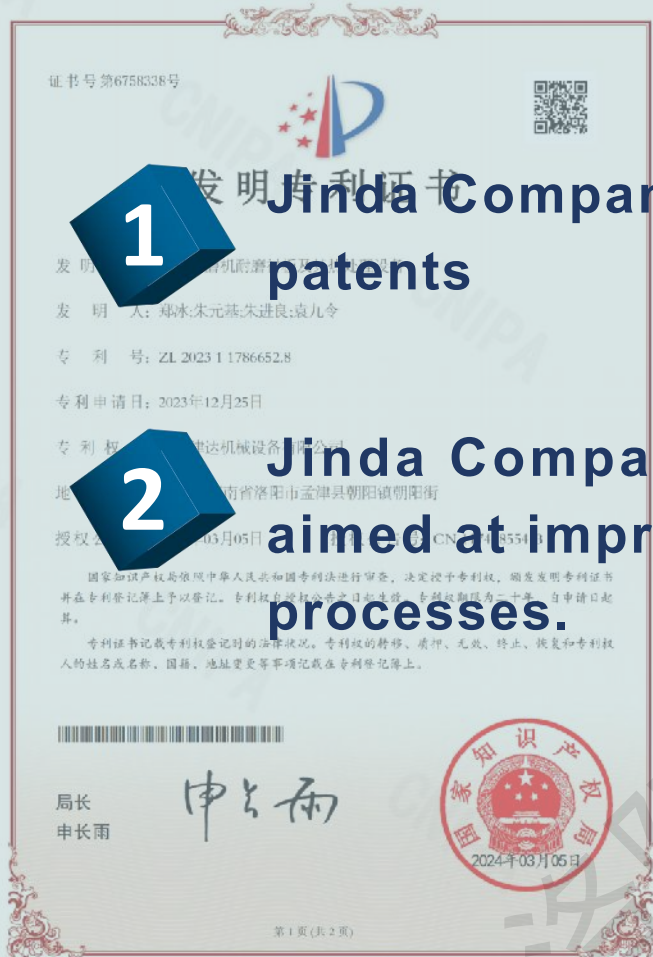
Advance Materials

1

Jinda Company holds over 20 utility model patents and 2 invention patents

2

Jinda Company has been conducting research and development aimed at improving product performance and improving production processes.





JD
Advance Materials



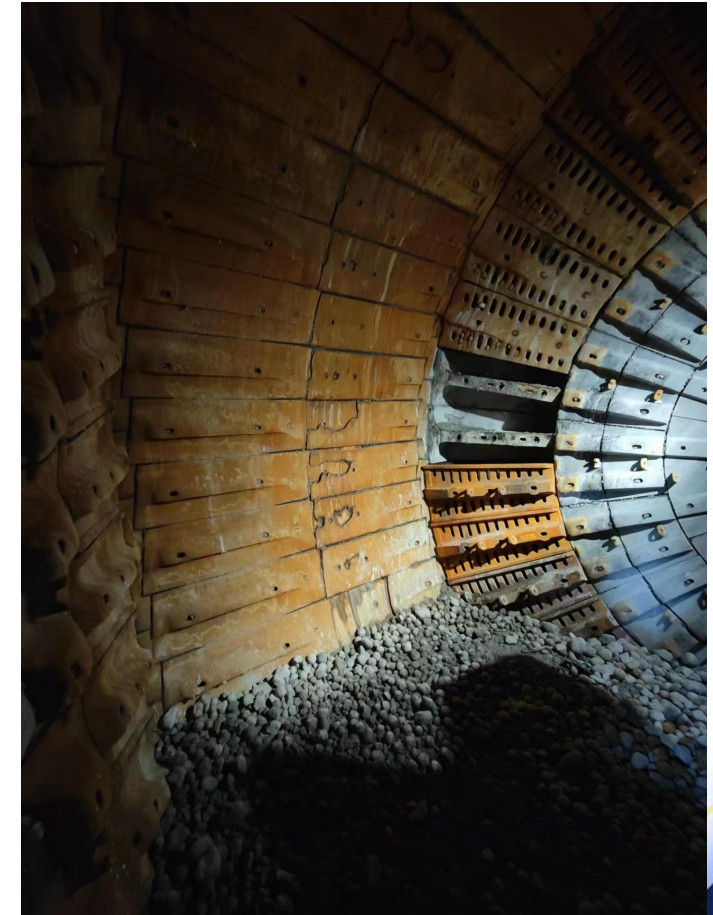
Large SAG mills and Ball mills special metal wear-resistant lining



Case 1:

The liner situation of a SAG mill with a diameter of 11*5.4 meters in a large copper mine by an internationally renowned liner manufacturer M1.

- Runs for 75 days with $\Phi 140\text{mm}$ steel balls, using liners produced by international company M1.

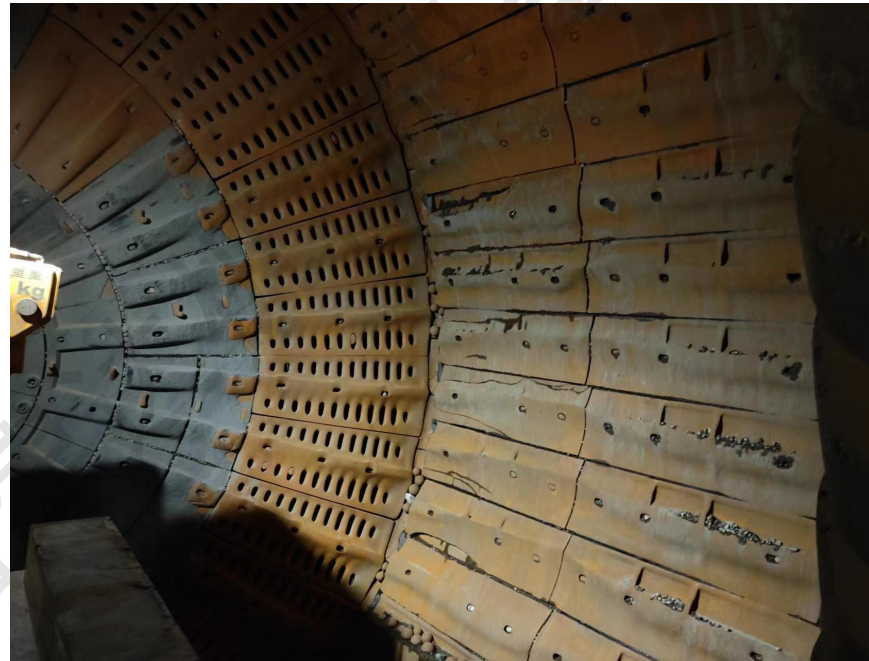




Case 1:

*The liner situation of a SAG mill with a diameter of 11*5.4 meters in a large copper mine by an internationally renowned liner manufacturer M2.*

- In July 2022, the same mill ran for 73 days with $\Phi 140\text{mm}$ steel balls, using liners produced by international company M2.

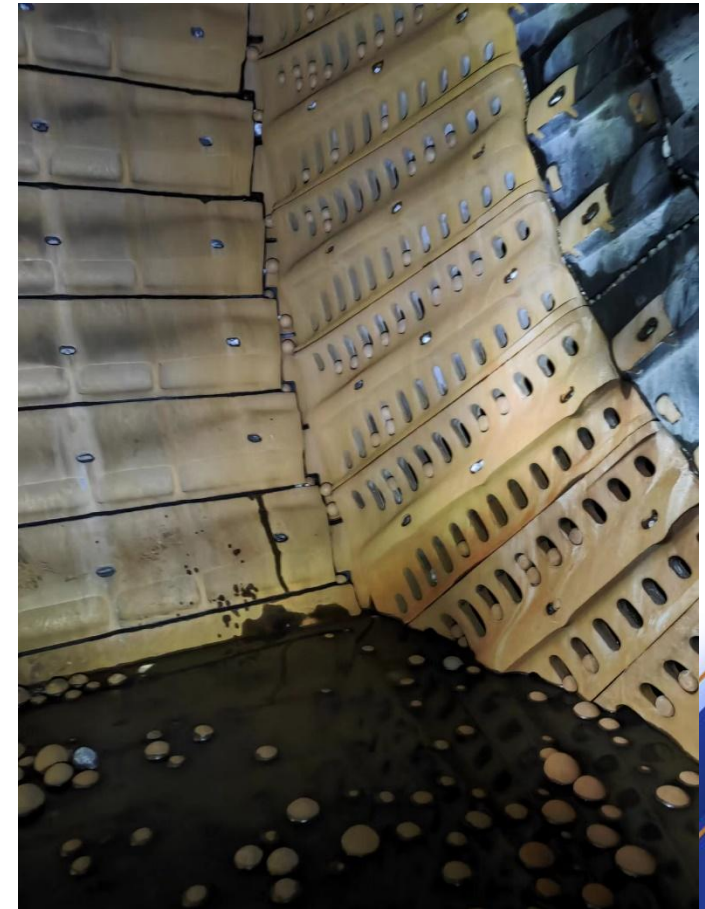
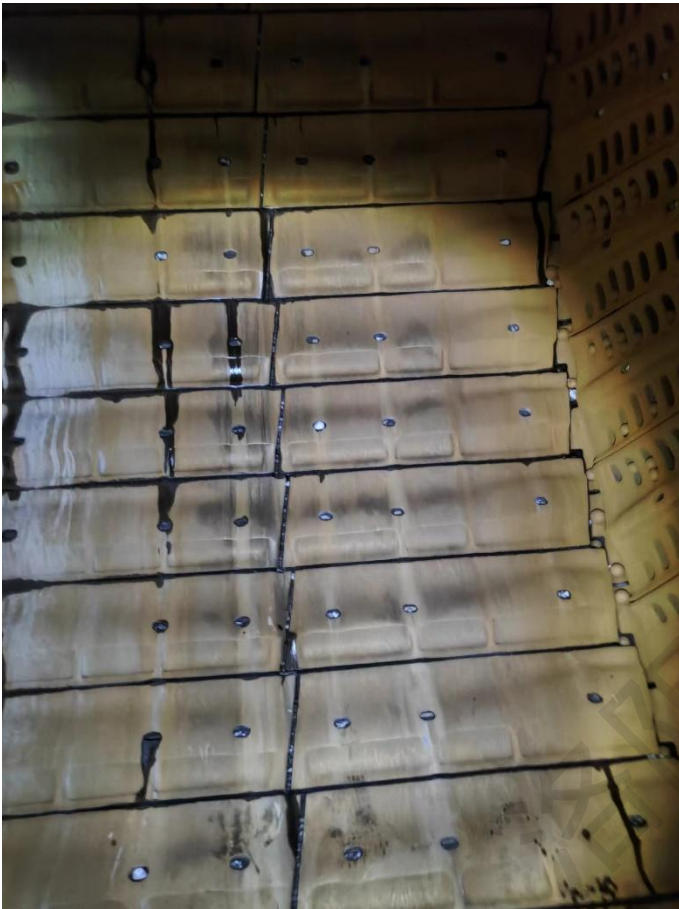


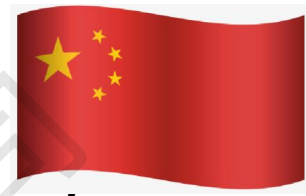


Case 1:

The liner situation of a SAG mill with a diameter of 11*5.4 meters in a large copper mine by LuoyangJinda Machinery Equipment Co., Ltd.

- The same mill runs for 75 days with $\Phi 140\text{mm}$ steel balls, using liners from JINDA Machinery Equipment Co., Ltd.

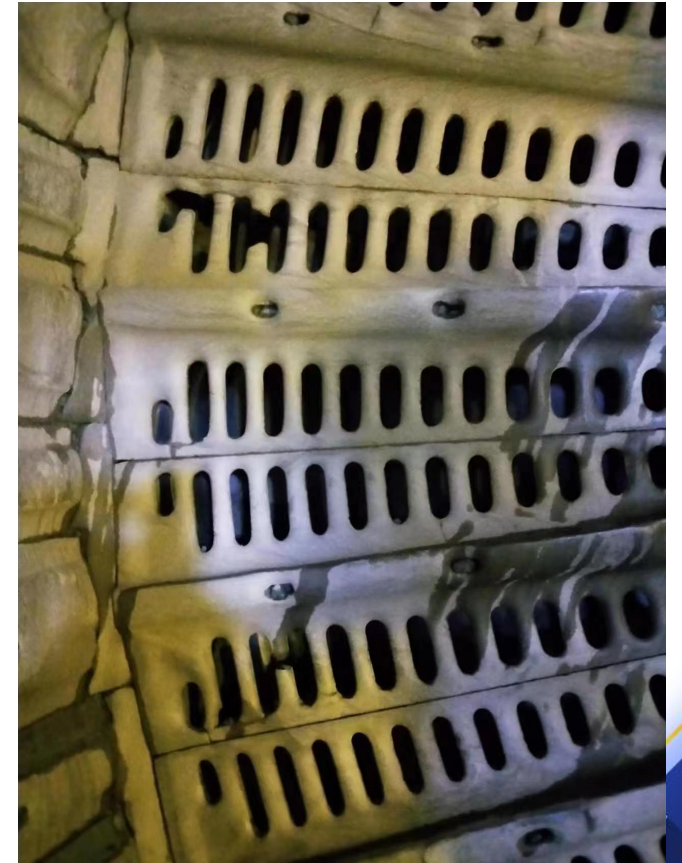




Case 2:

The use of the liners produced by an internationally renowned liner manufacturer N1 in a large gold and copper mine equipment with a diameter of 11*6.4 meters SAG mill

- Runs for 45 days with $\Phi 140\text{mm}$ steel balls, using liners from manufacturer N1. shell liners and lattice plates fractured.

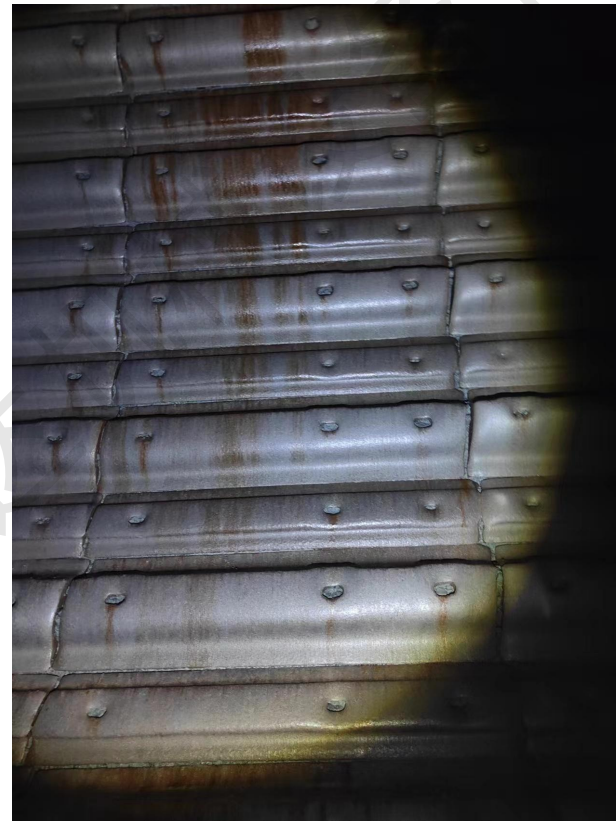




Case 2:

The use of liners produced by Luoyang Jinda Machinery Equipment Co., Ltd is a large gold and copper mine equipment with a diameter of 11*6.4 meters SAG mill

- **The same mill runs for 105 days with $\Phi 140\text{mm}$ steel balls, using liners from JINDA Machinery Equipment Co., Ltd. Intact and smooth surface, without breakage or fracture**



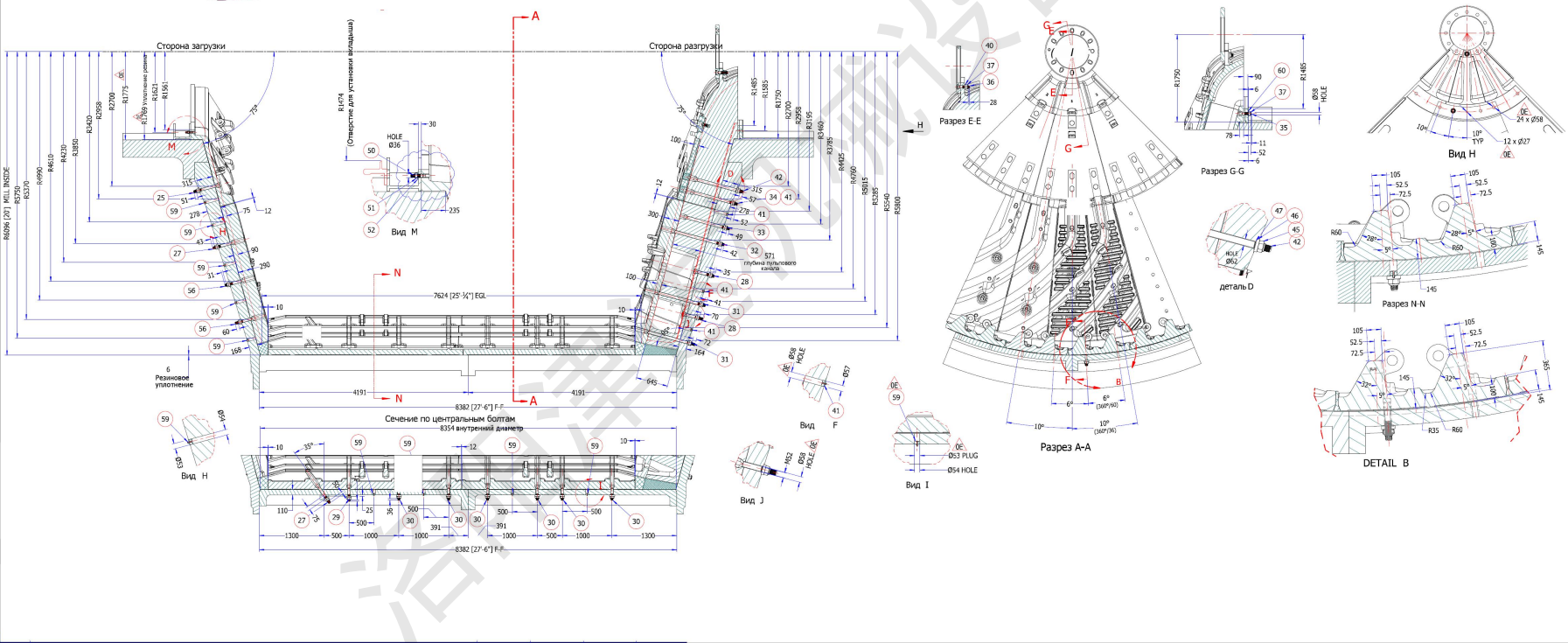
Comparison with the quality of liners from other manufacturers



JD
Advance Materials

- The lattice plates of Jinda Machinery Equipment Co., Ltd. used for 165 days, without deformation or cracking





№ п/п		Наименование		кол-во	вес (кг)	вес/миллиона
1	FE	гайки-дефекторы	9	212,0	1908,9	0
2	FE	наружный вкладыш	36	250,0	9003,6	0
3	FE	закладное кольцо 1202 LG	64	61,0	3904,0	0
4	FE	FE футеровка барабана стороны загрузки	30	694,0	2086,20	0
5	FE	FE футеровка барабана стороны разгрузки	30	695,0	1914,60	0
6	FE	оконечная ракета с расстоянием 46 мм	36	516,0	481,80	0
7	FE	устройство для разгрузки пылью тип 2 C/W GAS-06	6	4616,2	2769,6	0
8	FE	устройство для разгрузки пылью тип 2 C/W GAS-06	6	4711,6	2629,6	0
9	FE	закладное кольцо	6	311,0	481,80	0
10	FE	наружный вкладыш	36	4074,0	14667,0	0
11	FILLER	BLOCK 1202 LG	32	146,0	2672,0	0
12	16mm	резиновая соединительная прокладка 75(4) x 131(5B)	9	4,0	0,88	0,0
13	16mm	резиновая соединительная прокладка 75(4) x 285(8B)	36	8,0	788,8	0,0
14	16mm	резиновая соединительная прокладка 145(4) x 367(8B)	60	16,0	960,0	0,0
15	22mm	резиновая соединительная прокладка 65(4) x 272(8B)	36	7,0	252,0	0,0
16	22mm	резиновая соединительная прокладка 65(4) x 339(8B)	12	4,0	48,0	0,0
17	M48	конический болт с овальной головкой 40(0) x BEO	36	8,1	0,0	0,0
18	M48	конический болт с овальной головкой 30(0) x C	36	7,0	0,0	0,0
19	M52	конический болт с овальной головкой 32(0) x GREEN	24	7,4	0,0	0,0
20	M48	конический болт с овальной головкой 20(0) x BLACK	60	5,3	0,0	0,0
21	M48	конический болт с овальной головкой 24(0) x NO COLOR	360	5,0	0,0	0,0
22	M52	конический болт с овальной головкой 30(0) x YELLOW	72	18,0	0,0	0,0
23	M52	конический болт с овальной головкой 133(0) x GRAY	36	18,0	0,0	0,0
24	M52	конический болт с овальной головкой 88(0) x LIGHT GREEN	36	16,3	0,0	0,0
25	M42	конический болт с овальной головкой 90(0) x MAGENTA	12	16,6	0,0	0,0
26	M52	конический болт с овальной головкой 130(0) x ORANGE	46	24,6	0,0	0,0
27	M52	конический болт с овальной головкой 190(0) x 140(1) x 53(2) x BROWN	12	4,3	0,0	0,0
28	M52	миллиметровая стопорная гайка	264	1,3	0,0	0,0
29	M52	шайба сферическая	228	0,9	0,0	0,0
30	M52	резиновая шайба	228	0,0	0,0	0,0
31	M52	штыльная плоская шайба	12	0,9	0,0	0,0
32	O007	резиновая заглушка (C/W WASHER, болт и гайка в комплекте)	132	0,1	0,0	0,0
33	M56	конический болт с овальной головкой 25(0) x PURPLE	36	20,5	0,0	0,0
34	M56	миллиметровая стопорная гайка	36	1,6	0,0	0,0
35	M56	шайба сферическая	36	1,1	0,0	0,0
36	M56	резиновая шайба	36	0,0	0,0	0,0
37	M30	конический болт с овальной головкой 120(0) x LIGHT GREEN	36	1,3	0,0	0,0
38	M30	миллиметровая стопорная гайка	36	0,3	0,0	0,0
39	M30	штыльная плоская шайба	36	0,2	0,0	0,0
40	M48	миллиметровая стопорная гайка	624	1,0	0,0	0,0
41	M48	шайба сферическая	624	1,0	0,0	0,0
42	M56	резиновая шайба	624	0,0	0,0	0,0
43	M56	конический болт с овальной головкой 24(0) x GREEN	72	6,4	0,0	0,0
44	M52	резиновая заглушка с овальным болтом в комплекте	12	0,7	0,0	0,0
45	M56	резиновая заглушка с овальным болтом x 100(0)	36	1,0	8,4	0,0
46	O003	резиновая заглушка (C/W WASHER, болт и гайка в комплекте)	420	0,1	0,0	0,0
47	M52	штыльная плоская шайба (S/W SHIM)	24	0,3	0,0	0,0
					Общая масса	81569,2



Contact Us



Engineers and technical experts from **Jinda Company**
Always ready to answer all your technical questions

Website: www.lyjinda.com

Email: hljinda@lyjinda.cn



Tel: +86 182 119 79505

+86 138 037 90488

Whatsapp: +86 182 119 79505

